

DC 500 Casting Resin

Photosensitive Resin for DigitalWax® J Series Stereolithography Systems

Features

- Smooth surface
- High resolution
- High accuracy
- No further manual finishing needed

Hints for design

The elasticity of the DC500 Casting Resin allows you **to set the stones directly in the resin model**. **DC500 Casting Resin** is the perfect material **for thin wire patterns** which are impossible to be replicated using rubber moulding methods.

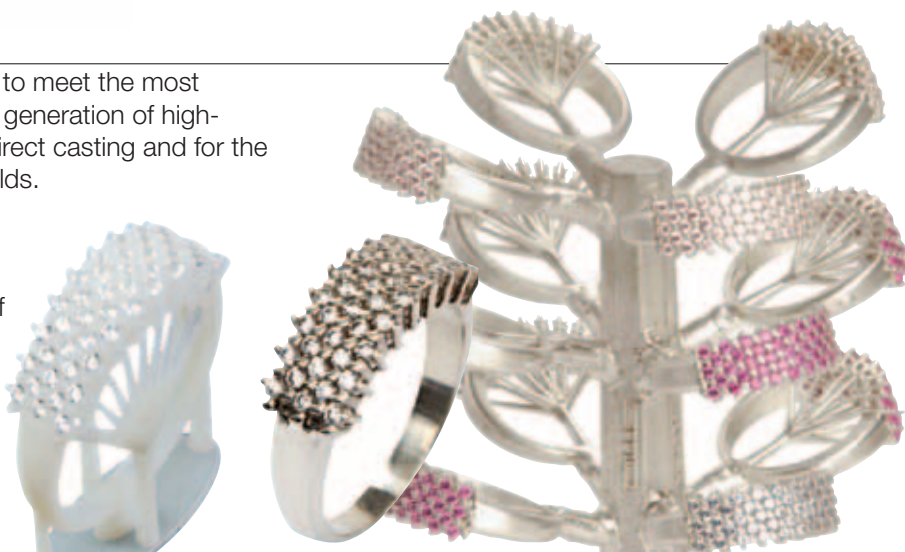
DIGITALWAX® J Resins

In its continuous effort to offer new products to meet the most demanding requirements, DWS offers a new generation of high-performance SLA photosensitive resins for direct casting and for the production of master models for rubber moulds.

DC Series: resins for direct casting

DC500 Casting Resin was specially developed for **direct investment casting** of jewelry models.

DC500 Casting Resin allows the building of **detailed parts with high quality resolution and smooth surfaces** which do not require any other manual finishing.



Technical characteristics of the liquid material

Environmental values for use	22°C – 25°C – max. RH 40%-60%
Appearance/colour	slightly yellow clear liquid
Viscosity	400-600 mPa·s at 25°C

Technical characteristics of the resin parts after UV post-curing

Hardness (Shore D)	48
Flexural Strength (MPa)	5.2
Flexural Modulus (MPa)	95
Application/Use	for direct casting of jewelry patterns

DC500 Casting Resin can be used in the whole DigitalWax® J range